

Technical Data Sheet



Staphylococcus Protein A (r-SPA)

General Information

Catalog Number: A04S

Formulation: The product is lyophilized from a sterile solution of protein in 5 mM PB, pH 7.4.

Mol. Wt.: 30 kDa

Theory pI: 5.10

Resources: *Escherichia coli* (*E. coli*)

Purity: $\geq 95\%$

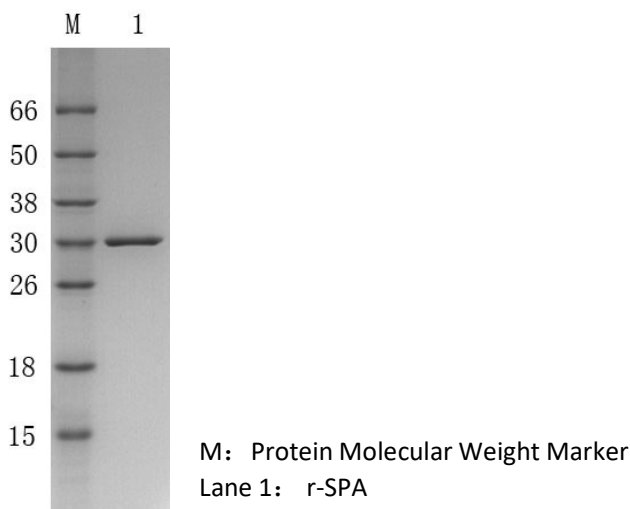
Product is stable for up to three years from date of receipt at -20°C to -80°C.

It is recommended that the protein be aliquoted for optimal storage.

Avoid repeated freeze-thaw cycles.

Description

Protein A is a cell wall protein deriving from *Staphylococcus aureus* which exhibits unique binding properties for IgG from a variety of mammalian species and for some IgM and IgA as well. It binds with the Fc region of immunoglobulins preferentially through interaction with the heavy chain. It is conjugated to a wide variety of reporter molecules including fluorescent dyes, enzyme markers, biotin, colloidal gold and radioactive iodine for use in immunology and other biological research without affecting the antibody binding site. It is also immobilized onto solid supports such as agarose beads for total IgG purifying from ascitic fluid, serum, culture supernatants and cell extract or interest protein.



Notes:

It is recommended that the product is reconstituted with sterile water into a final concentration of 10 mg/ml freshly.

Research use only or for further manufacturing